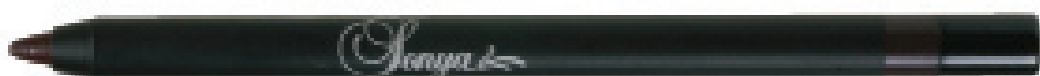


#177



#179



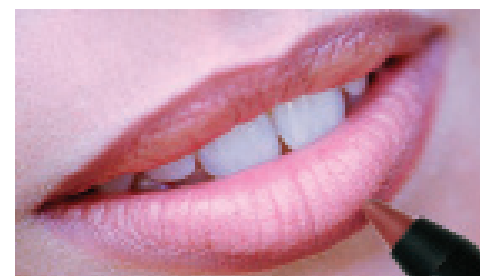
#175

Sonya® Lip Pencil

Creamy and smooth, the Sonya Lip Pencils glide on easily to line and define your lips with ease. Complete your look with your favorite shade of Sonya Lipstick and Sonya Lip Gloss.

AVAILABLE IN 2 SHADES:

Mystique	177
Grapevine	179
Cocoa	175



Mystique 177

- Sharpen with the Sonya Pencil Sharpener (#7052) for a perfect, precise application every time
- For longer-lasting lip colour, fill in entire lip area with Lip Pencil, then add your favorite Sonya Lipstick.

